



Mulwaree News

40 McDermott Drive, Goulburn. Ph: 02 4821 4499 Email: mulwaree-h.school@det.nsw.edu.au

Endeavour to Achieve

The next meeting of the P&C will be on Thursday 24th October 2013 7:30-9:15pm sharp in the Staff Common Room. Agenda items for P&C can be emailed to: mulwaree-h.school@det.nsw.edu.au two weeks before the meeting for inclusion on the agenda.

Year 9/10 Luna Park Excursion

Last Monday, 47 Year 9/10 Commerce and Business students ventured up to Luna Park, Sydney for an educational and entertaining day. It was an early start for all (with some arriving with seconds to spare). We experienced the joy of Sydney peak hour traffic on the M5 and waved to the thousands of commuters on their way to work as we crossed the Harbour Bridge. Before the park opened, students participated in an information lecture about the operation of Luna Park as a business. They examined the legal structure of Luna Park and the marketing strategies Luna Park uses to entice greater visitors. Students then had the opportunity to "sample" what rides Luna Park had to offer (including the sheer terror of the "Merry Go Round"). A fun day was had by all.

Mr Wolter



The team at Essential Employment and Training would like to thank the students and teachers from Mulwaree High School that participated and assisted in making ProjectABLE

Goulburn a huge success.

We are extremely grateful for the hard work and efforts of each individual and are committed to working together in the future in order to strengthen our relationship.

PLEASE NOTE: CALCULATORS ARE AVAILABLE FROM MULWAREE OFFICE FOR \$22.

Sports Shirts for Embroidering

Years 7-10 End of Week 3 Term 4

Shirts must be washed and named with a list of sport/dance representation.

Bring something else appropriate to wear for sport and PE other than your white MHS shirt.

P & C very generously pay for the embroidery on sports shirts and we thank them for their continuing support.

Please return the perpetual trophies and shields to the front office as a matter of urgency.



China Once Again

We are back from China!!! Among the 1.3 billion people in China, we were only 36; 15 students, 7 teachers and 14 parents and friends. No one went missing! Because we stayed together "like sticky rice".

This is Mulwaree High School's second trip to China. During the 11 days trip from 21st September to 1st October, we had 6 flights, international and domestic, and stayed in 5 hotels and visited 3 cities. We had so many things to see and so many stories to listen to.

It was "an epic adventure of tastes, colours and smells". It was an amazing first-hand experience of one of the world's oldest civilisations!

Ms Guo





Year 6 Orientation Evening

On Wednesday night, Year 6 students and their parents came to Mulwaree for the annual Orientation Evening. Approximately 250 visitors attended, with all enjoying a range of activities offered by the staff and students currently attending Mulwaree. Parents were particularly dazzled by the delights of our Ag Farm and the alpacas and sheep were a big hit. Similarly, the tour of the school allowed parents to see the huge range of educational opportunities that will greet their children when they arrive in Year 7 next year. A big thank you must go to the Year 11 prefects and sports captains and SRC who took time out of their busy schedules to help out on the night. Also the work of staff who helped out in serving dinner and opening up classrooms was greatly appreciated. A great night was had by all!

Miss Nance





Goss From The Boss

As we are all aware, the fires that have ravaged the Blue Mountains and Southern Tablelands have claimed well over 200 homes. Springwood High School students are at the very front of these fires and many have literally lost everything they own. Mulwaree High School students have known long term disaster in

the form of crippling drought. The fire disaster has been devastating. Consequently, the staff, students and P & C are going to run an appeal to support those who have lost everything from Springwood High School and for the Rural Fire Service which supports our students through their cadet program. I ask that we all dig deep so that we can help these students with new uniforms, books, bags etc. Every little bit counts and we can show what we stand for. This appeal will be run by the SRC, Prefects and Year 9 MAP.

Year 6 parents and students attended a wonderful evening at Mulwaree last Wednesday evening. It was a great opportunity to meet our new students and parents in such a great atmosphere. I would like to thank Miss Nance and the staff who stayed at school, for the work they have done in putting together the evening. I would also like to thank our Prefects and SRC students who were involved in showing our guests around. They are certainly showing how worthy they are of the honour of being student leaders.

Mr Purcell
Principal



Not In Vein

Mulwaree students can donate blood during sport on a Thursday. You must be 16 years or over. Please see Mrs Christoff in the PE staffroom for a permission note.

Mulwaree High School acknowledges the community service of Zac Searl, Luke Morus and Joel Albury.

Health Awareness Calendar

October	
Month	Foot Health Month
Month	Girls Night In - Cancer Council Australia
Month	Lupus Awareness Month
28th	Pink Ribbon Day - Cancer Council Australia
28th	Blue Knot Day - Adults Surviving Child Abuse
November	
Month	November
Month	Lung Awareness Month
Month	Premature Awareness Month
10th - 16th	Spinal Injuries Awareness Week
10th - 16th	National Psychology Week
12th	Thank You NICU Day - Miracle Babies Foundation
14th	World Diabetes Day
17th	World Prematurity Day
18th - 24th	National Cervical Cancer Awareness Week

Important Calendar Dates

29/10 Tues Debating finals in Bomaderry
30/10 Wed MULWAREE ROCKS
1/11 - 8/11 Years 7 - 10 Exams
13/11 Wed Year 8 ESSA Tests
13/11 Wed Year 11 Ancient History Excursion to Syd Uni
14/11 Thurs Year 12 Formal
15/11 Fri Duke of Ed Hike (tbc)
5/12 Thurs Endeavour Awards Excursion to Jamberoo
9/12 Mon Semester 2 Assembly
10/12 Tues Presentation Night 7pm
16/12 -17/12 End of Year Activities
18/12 Wed Students last day for 2013
19/12-20/12 Staff Development Days

McNoNo

Students are not to get deliveries of McDonalds or other take away food at lunch time and no student is to leave the school without written permission and a valid leave pass at any time during the day. This includes Year 12.

Mulwaree High School would like to thank Chickenman Goulburn for their ongoing support and for supplying chicken and salads for the Year 6 Orientation Evening.

CHICKENMAN
GOULBURN
SHOP 10,
CENTRO Mall
217 AUBURN STREET,
GOULBURN 2580.
PH: (02) 48210 389

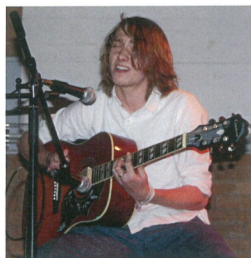


CHICKENMAN
GOULBURN
SHOP 9,
MARKETPLACE,
12 VERNER STREET,
GOULBURN 2580.
PH: (02) 48210 382

CHICKENMAN GOULBURN PROUDLY SUPPORTS MULWAREE HIGH SCHOOL

**For all your catering
needs including
BBQ (Mouth-watering)
Chickens and Fresh
Delicious Salads
Contact us now for a
quote!**

for fresh local chicken - trust the Chickenman!



Mulwaree 'Rocks'

Come along for a great night of music and dance!
Bands, individuals, duos and whole classes will be performing and showcasing their musical talents!

When: Wednesday 30th October 2013

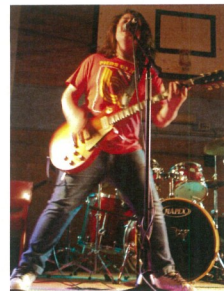
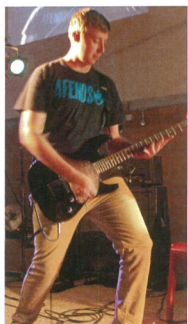
Where: Mulwaree High School Auditorium

Time: 7:00pm-9:00pm

Cost: \$5 per person

Tickets must be pre purchased from SRC in D7 at Lunch.

They will not be available at the door.



Canteen available.
We look forward to seeing you there!



Transport
Roads & Maritime
Services



Attention Learner Drivers and Supervisors!

FREE WORKSHOP WEDNESDAY 6th NOVEMBER

The *Helping Learner Drivers Become Safer Drivers* workshops for supervisors, held in Goulburn, aims to provide advice about:

- Confidently and effectively supervising learner drivers.
- Understanding new laws for Learners and driver log books

LOG BOOK RUN SUNDAY 10th NOVEMBER 11AM

The logbook run follows a route around Goulburn that includes a wide range of driving conditions and tasks ending up at the Police Driver Training Centre for further tips on safe driving. (Must have a minimum of 30hrs up)

The Rotary Club of Goulburn will marshal the logbook run, provide a free BBQ and offer feedback on drivers practice needs.

Bookings are essential – for information or to register contact Council's Road Safety Officer on 4823 4510 or email tracey.norberg@goulburn.nsw.gov.au

Funded by NSW Department of Education and Communities

Hey , Let's learn
Chinese!

Goulburn Chinese Language School
goulburncls@gmail.com

New class!
New location!

Starting Term 3

Age: K – Year 12

Time: Monday

3:30–5:30

Fees: \$125 / term

At Mulwaree High School

Tel: 4821 4499



I'M READY...

TO EXPLORE MY OPTIONS!

2014 ENROLMENTS OPEN ONLINE 2 NOVEMBER
CHOICES DAY INFO SESSION GOULBURN CAMPUS
SATURDAY 2 NOVEMBER 10AM - 2PM

www.illawarra.tafensw.edu.au | 1300 766 123

Follow TAFE Illawarra



TAFE
ILLAWARRA
INSTITUTE

GOULBURN CAMPUS COURSES ON OFFER AT GOULBURN CAMPUS IN SEMESTER 1, 2014

Automotive, Transport and Maritime

Automotive Mechanical Technology (Specialising in agricultural mechanical) Certificate III

Automotive Mechanical Technology (Specialising in heavy vehicle mobile equipment) Certificate III

Automotive Mechanical Technology (Specialising in heavy vehicle road transport) Certificate III

Automotive Mechanical Technology (Specialising in light vehicle) Certificate III
Automotive/Metal Fabrication (Pre-Vocational) Certificate II
Outdoor Power Equipment Certificate II

RMS AGIS Examiner - Gas Light Vehicle* Course
RMS ASCIS Examiner - Light Vehicle* Course
RMS ASCIS Proprietor - Light Vehicle* Course

RMS ASCIS Proprietor/Examiner - Light Vehicle* Course
RMS AUVIS Examiner - Light Vehicle* Course
RMS AUVIS Proprietor - Light Vehicle* Course
RMS AUVIS Proprietor/Examiner - Light Vehicle* Course

Beauty and Hairdressing
Hairdressing Certificate II & III
Retail Make-up and Skin Care Certificate II

Building and Construction
Asbestos Awareness* TAFE Statement
Asbestos Removal (Supervisor)* Statement of Attainment
Carpentry Certificate III
General Construction OHS Induction in NSW* Statement of Attainment
Non-Friable Asbestos Removal* Statement of Attainment
TLIO Licensing Units of Competency (Forklift)* Statement of Attainment

Work Safely at Heights* Statement of Attainment

Business and Administration

Bookkeeping Certificate IV
Business Certificate II
Business Administration Certificate III & IV
Frontline Management Certificate IV
Human Resources Certificate IV
Using Advanced Software Functions (in an Office Environment) Statement of Attainment
Using Computers in an Office Environment Statement of Attainment

Community and Health

Aged Care Certificate III
Children's Services Certificate III
Children's Services (Early childhood education and care) Diploma
Community Services Work Certificate IV & Diploma
Massage Therapy Certificate IV

Engineering and Manufacturing

Flux Core Arc Welding (FCAW) Statement of Attainment
Gas Metal Arc Welding (GMAW) Statement of Attainment
Gas Tungsten Arc Welding (GTAW) Statement of Attainment
Manual Metal Arc Welding (MMAW) Statement of Attainment

Environmental, Horticultural Rural and Animal Studies

Agriculture Certificate II, III, IV & Diploma
Animal Studies Certificate II & III
Chainsaw Operations - Horticulture* Statement of Attainment
Chainsaw Operations - Horticulture (Introduction)* Statement of Attainment
Chainsaw Operations (Level 1 & Level 2)* Statement of Attainment
Chemical Application* Statement of Attainment
Companion Animal Services Certificate III
Conservation and Land Management Certificate II, III & Diploma
Horse Industry Management (Performance Horse) Diploma

Horse Industry Operations (Performance Horse) Certificate II
Horse Industry Practice (Performance Horse) Certificate III
Horticulture Certificate II, III & Diploma
Veterinary Nursing Certificate IV
Wool Classing Certificate IV
Wool Clip Preparation Certificate III
Wool Handling Certificate II

Hospitality and Cookery

Aussie Host*
TAFE Plus Statement
Commercial Cookery Certificate III
Food Safety Supervision* Statement of Attainment
Hospitality Certificate II, III
Hospitality* Certificate IV
Kitchen Operations Certificate II
Patisserie Certificate III
Prepare and Serve Espresso Coffee* Statement of Attainment
Responsible Conduct of Gambling* Statement of Attainment
Responsible Service of Alcohol* Statement of Attainment
Travel Certificate III
Workplace Hygiene* Statement of Attainment

Information Communication Technology (ICT and Library Services)

Information, Digital Media and Technology Certificate I & II
Information, Digital Media and Technology (Multimedia) Certificate III
Information Technology Networking Certificate IV & Diploma

Pathways to Work or Study (including English Language courses)

Access to Work & Training (Introductory) Certificate I
Access to Work & Training Certificate I
Language, Literacy and Numeracy Course
Literacy Tutor Skill Set
Statement of Attainment
Preliminary Spoken and Written English Course
Preparation for Vocational and Further Study Certificate III
Skills for Work and Training Certificate II
Spoken and Written English Certificate I & II
Tertiary Preparation Certificate IV

1300 766 123 | www.illawarra.tafensw.edu.au | Follow TAFE Illawarra



* **FAST TRACK** Different price structure applies.
Date Published: September 2013.
Information correct at time of printing.

Late Arrival

If students are late to school, they must first report to the Front Office, fill in the Late Book and obtain a note for admission to class. Lateness contributes to total absences recorded on student report forms. A note from a parent explaining lateness should be given to the front office on arrival or to your roll teacher the following school day. Punctual arrival at school is important. Any pattern of late arrival has serious consequences. Late arrival on three occasions without a legitimate reason will result in After School Detention.

When writing notes for your child, could you please write your child's surname as well as their first name? We have lots of students with the same first name.



Aussie A.S.K. Aussie Goulburn Supporting Kids

For every settled loan we donate \$50-\$100 to the ASK fund

For a free appointment give Jeff or Matt a call at:

Aussie Goulburn
126A Auburn Street, Goulburn, NSW 2580
Tel: 02 4821 1540 Fax: 02 4821 1546
aussie.com.au/goulburn

It's Smart to Ask

Aussie

TAX FILE NUMBER



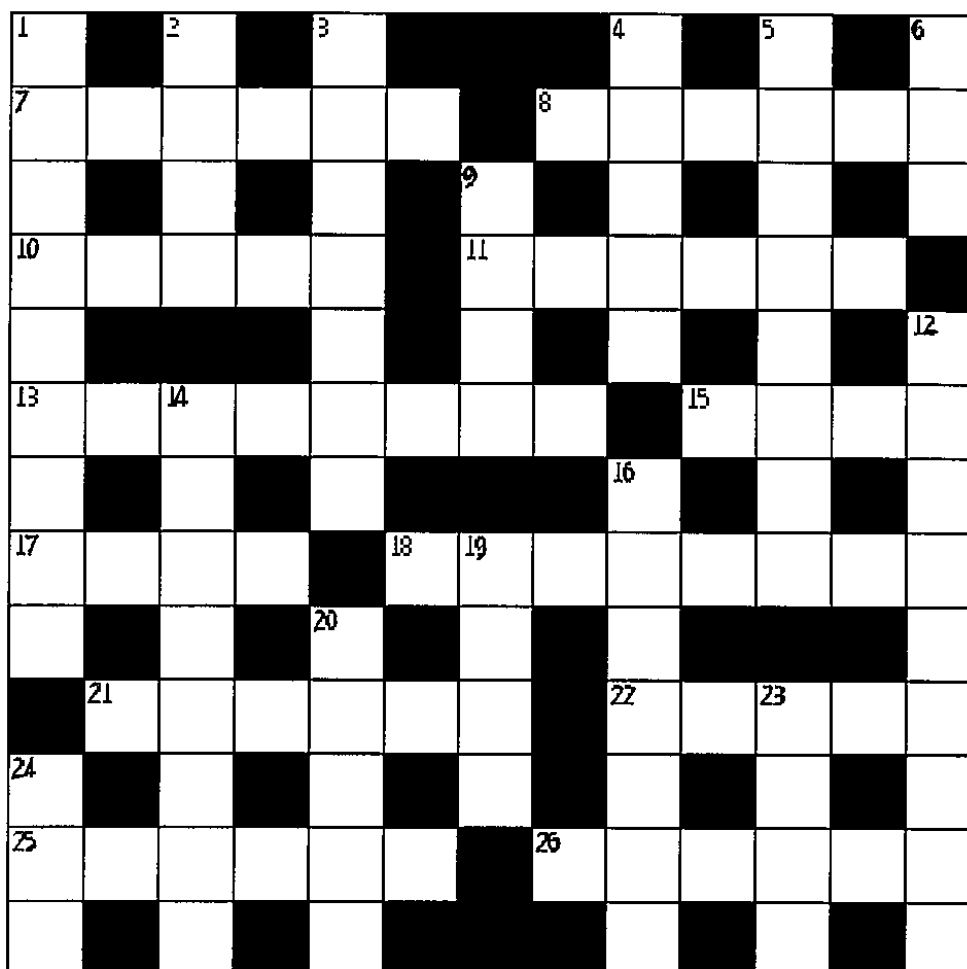
The Schools TFN (Tax File Number) service makes it easy for secondary students to apply because the school verifies your identity. Without a TFN your employer will tax you at the highest rate (46%). Please see Mrs Roberts in the Careers Office for an application form.

Cryptically Speaking

The Year 11 (now 12) Advanced English class has been learning to tackle cryptic crosswords throughout the year. We are all still learning, but one member of the class, Owen Perkins (the playwright) has taken it a step further. Owen composed his own cryptic crossword (which took me an entire weekend to finish) and the class is now doing Owen's crossword, one clue a lesson, instead of relying on the Sydney Morning Herald crosswords. There is a nice symmetry to this story. My English teacher, Mrs Logan, taught my class to do cryptic crosswords a very long time ago. I am passing on the skill.

Ms Wilson

Here is Owen's crossword for you to frazzle your brain with.



Across

7. Determined to sleep outdoors? (6)
8. Religion curses the sons who lead you inside (6)
10. It might be a slip, but strange pals come before the English capital (5)
11. When Rex is hot, it is bizarre that all we can do is urge (6)
13. Be courageous enough to display the televised battle (4,4)
15. Foot sore, see, otherwise north (4)
17. Online beach sport? (4)
18. The netted sticks show that dropped beer still contains anger (8)
21. What does a different sedative about the dead end do with a speaker's stand? (6)
22. We shall veto! Tallying will hold the whole thing (5)
25. Madness creates agitation (6)
26. The decimal base holds mixed regret whilst also holding soup (6)

Down

1. It's Obi! While confused about journal, he still studies life (9)
2. Freeze! This holds the last opportunity (4)
3. Poetically flipped? (7)
4. Could be strength... (5)
5. Neither a rodent, about weirdly, nor a giant (8)
6. Amidst my car keys lies a sacred container (3)
9. That man leads a flipped-out alternative! He must be very brave! (4)
12. An inner duel collapses into text emphasis (9)
14. Also, we bowl for longer (8)
16. Fur and felt, when juggled, can make you anxious (7)
19. The upper limbs allow you to fight (4)
20. Your own attempt to catch some sleep will make you light-headed (5)
23. To the metre, Kate holds a long and difficult mission (4)
24. This ring of friends is not on (3)

Rep Rap

This weeks interrogations/interviews

Meet The Teacher



Mrs Binns Head Teacher Mathematics

What subjects can you teach?
Mathematics.

What was your first job?
Shop Assistant

What is your favourite food?
Anything Italian.

What is the furthest place you have travelled to?
Europe, Great Britain.

What did you want to be when you were younger?
An actuary or a journalist.

Why did you become a teacher?
Equal pay and conditions for women at a time when this was not the case in other professions and I love Mathematics.

Who do you most admire and why?
Catherine Hamlin - an obstetrician and gynaecologist who founded a hospital in Ethiopia to treat women suffering from complications during childbirth. I admire her because she has acted to help women who were suffering unnecessarily by treating a problem that had been eliminated in the First World.

Rep Rap Report

Remember that we have two water refill stations placed under the E block Cola and on the oval outside the art rooms. Please respect them well as they are for your benefit.

If you have any ideas for the SRC, please don't be afraid to talk to your year representatives.
Stay informed for upcoming events!

Meet The Student



Taylah Loader School Vice Captain 2013/2014

What was your first job?
Dimmeys.

What is your favourite food?
Chicken Pad Thai and Kathy's Sticky Date

Pudding.

What are your favourite subjects?
English and Ancient History.

What do you want to be when you leave school?
I want to work somewhere in the psychology field.

What is the furthest place you have travelled to?
Brisbane, Queensland

Who do you admire most and why?
Walt Disney for giving me a childhood.

Secret Spot!

Do you know where this week's secret spot is? Don't forget to place your entry into the box in D7 for your chance to win a \$10 voucher at the canteen.

